

Display Report

Analysis Info

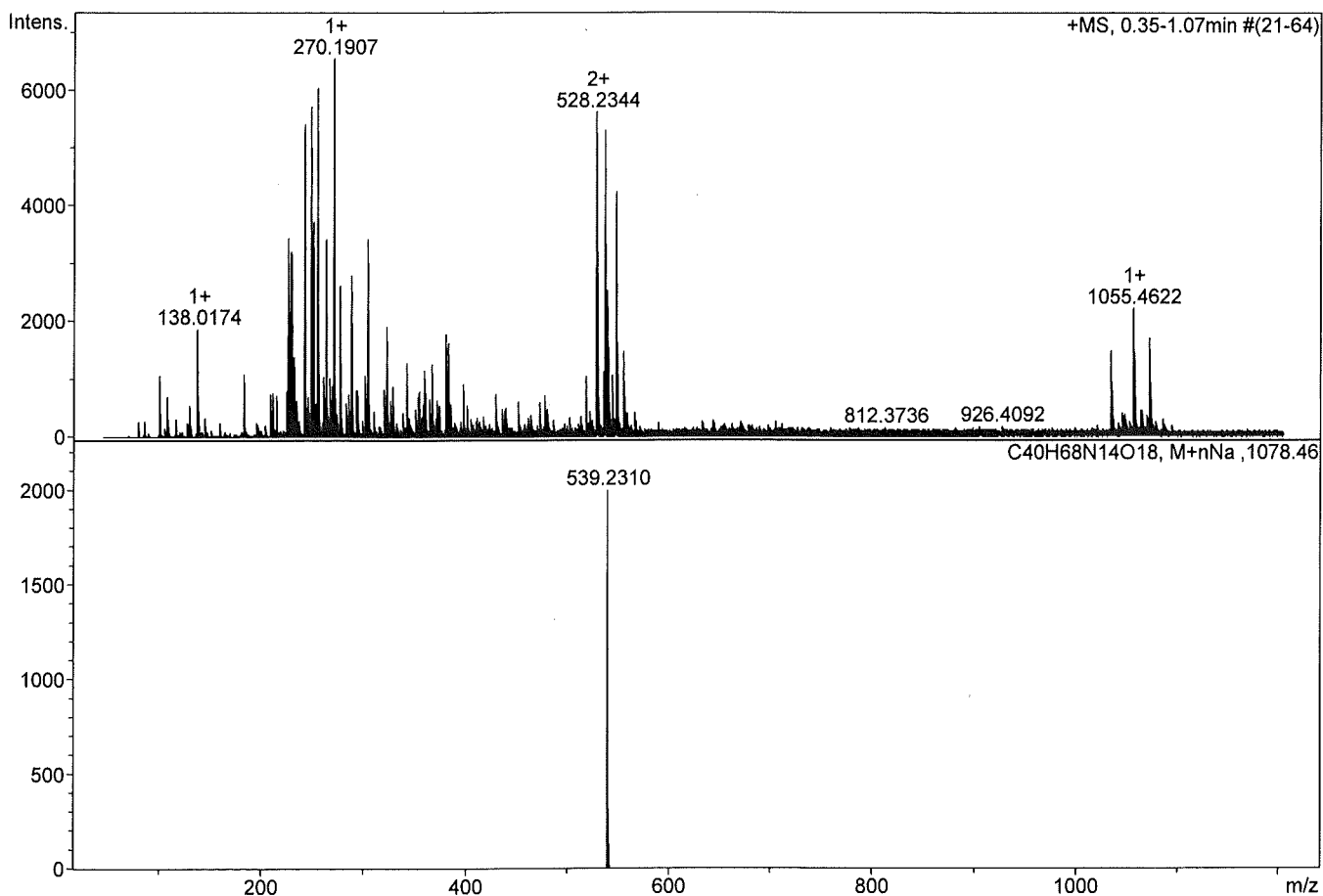
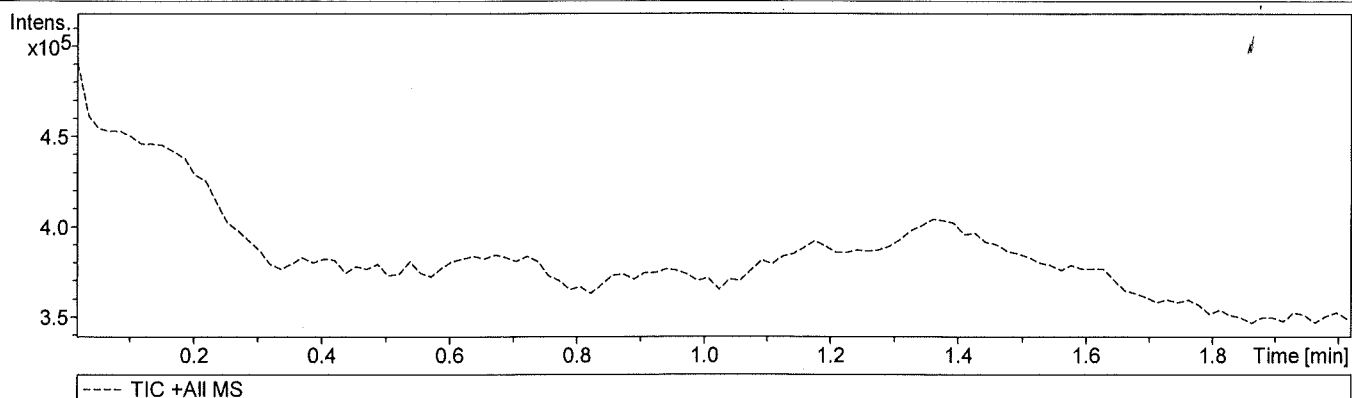
Analysis Name I:\data3\ak klein\Lena\Delftibactin 1033.05gmol-1.d
Method tune_low_pos_changed.m
Sample Name Delftibactin 1033.05gmol-1
Comment

Acquisition Date 9/10/2013 4:59:37 PM

Operator Tof-user
Instrument micrOTOF-Q II 10254

Acquisition Parameter

Source Type	ESI	Ion Polarity	Positive	Set Nebulizer	0.3 Bar
Focus	Not active	Set Capillary	4500 V	Set Dry Heater	180 °C
Scan Begin	50 m/z	Set End Plate Offset	-500 V	Set Dry Gas	4.0 l/min
Scan End	1200 m/z	Set Collision Cell RF	100.0 Vpp	Set Divert Valve	Source



Display Report

Analysis Info

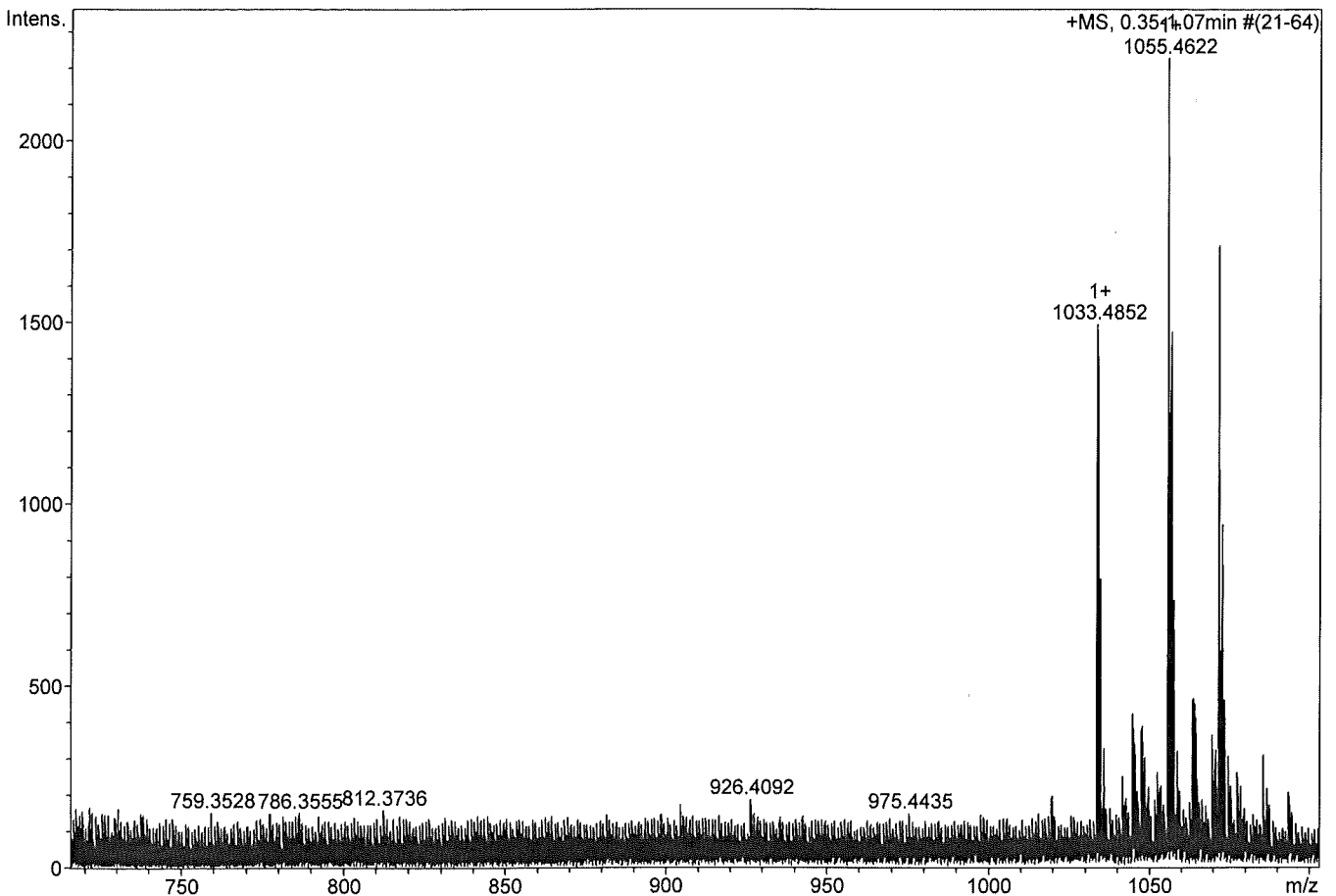
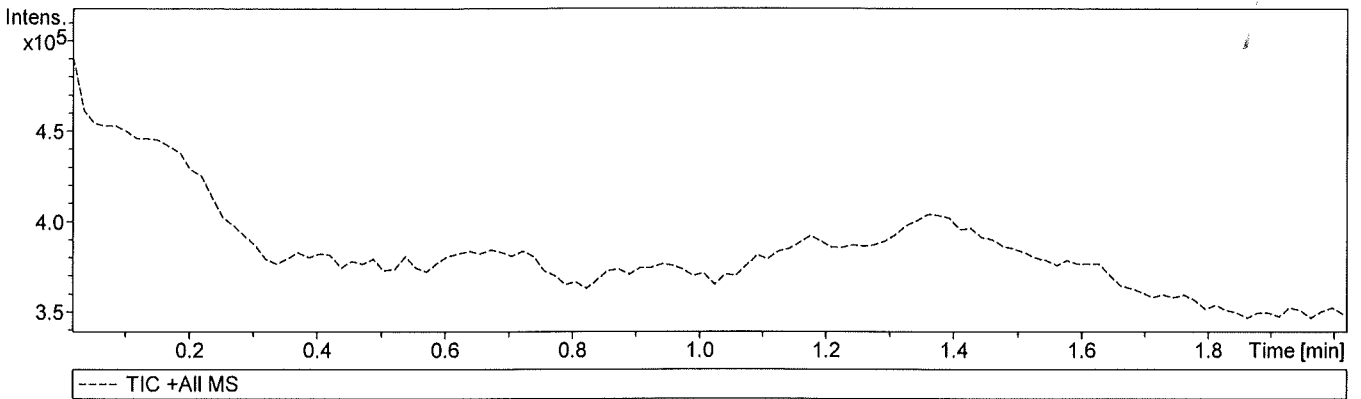
Analysis Name I:\data3\ak klein\Lena\Delftibactin 1033.05gmol-1.d
Method tune_low_pos_changed.m
Sample Name Delftibactin 1033.05gmol-1
Comment

Acquisition Date 9/10/2013 4:59:37 PM

Operator Tof-user
Instrument micrOTOF-Q II 10254

Acquisition Parameter

Source Type	ESI	Ion Polarity	Positive	Set Nebulizer	0.3 Bar
Focus	Not active	Set Capillary	4500 V	Set Dry Heater	180 °C
Scan Begin	50 m/z	Set End Plate Offset	-500 V	Set Dry Gas	4.0 l/min
Scan End	1200 m/z	Set Collision Cell RF	100.0 Vpp	Set Divert Valve	Source



Display Report

Analysis Info

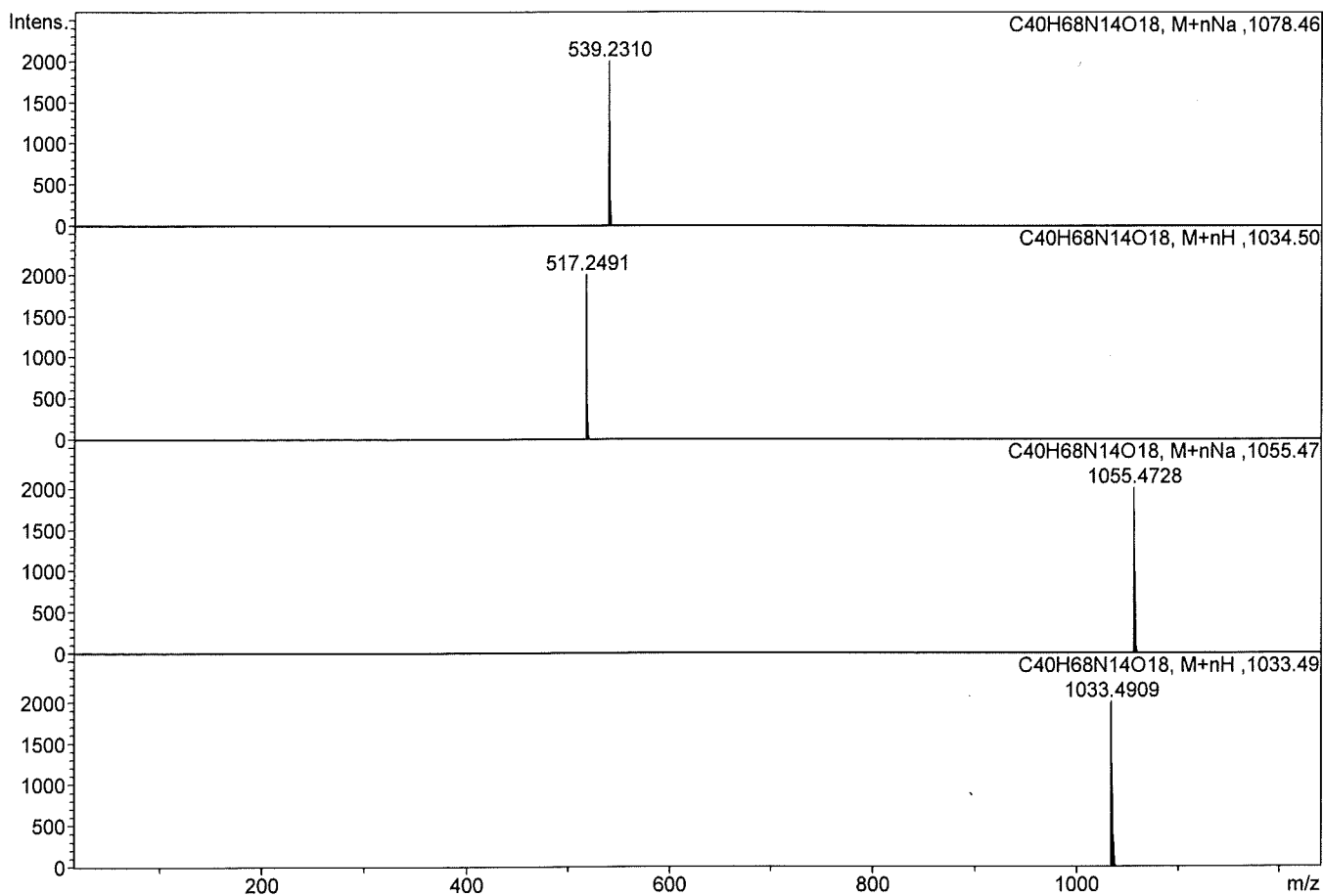
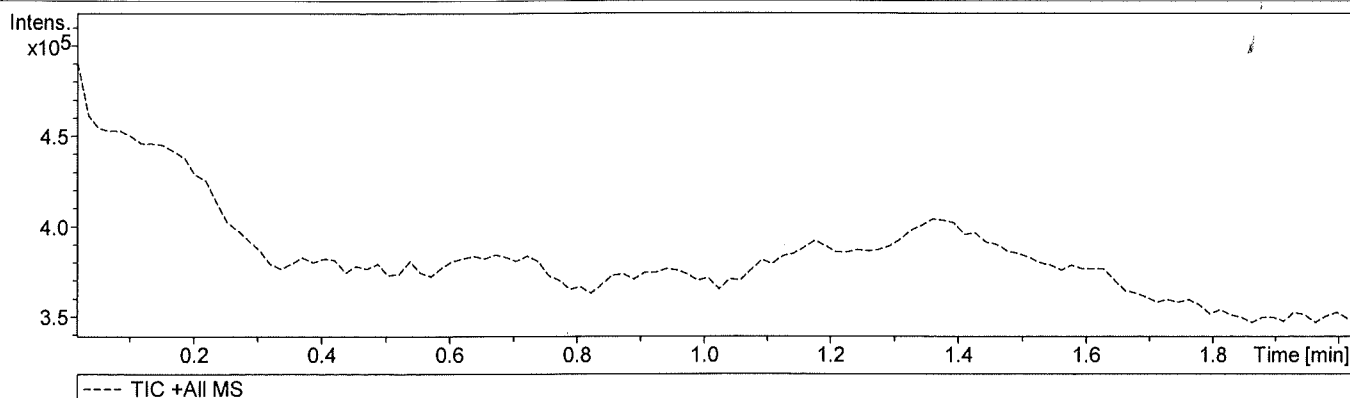
Analysis Name I:\data3\ak klein\Lena\Delftibactin 1033.05gmol-1.d
Method tune_low_pos_changed.m
Sample Name Delftibactin 1033.05gmol-1
Comment

Acquisition Date 9/10/2013 4:59:37 PM

Operator ToF-user
Instrument micrOTOF-Q II 10254

Acquisition Parameter

Source Type	ESI	Ion Polarity	Positive	Set Nebulizer	0.3 Bar
Focus	Not active	Set Capillary	4500 V	Set Dry Heater	180 °C
Scan Begin	50 m/z	Set End Plate Offset	-500 V	Set Dry Gas	4.0 l/min
Scan End	1200 m/z	Set Collision Cell RF	100.0 Vpp	Set Divert Valve	Source



Display Report

Analysis Info

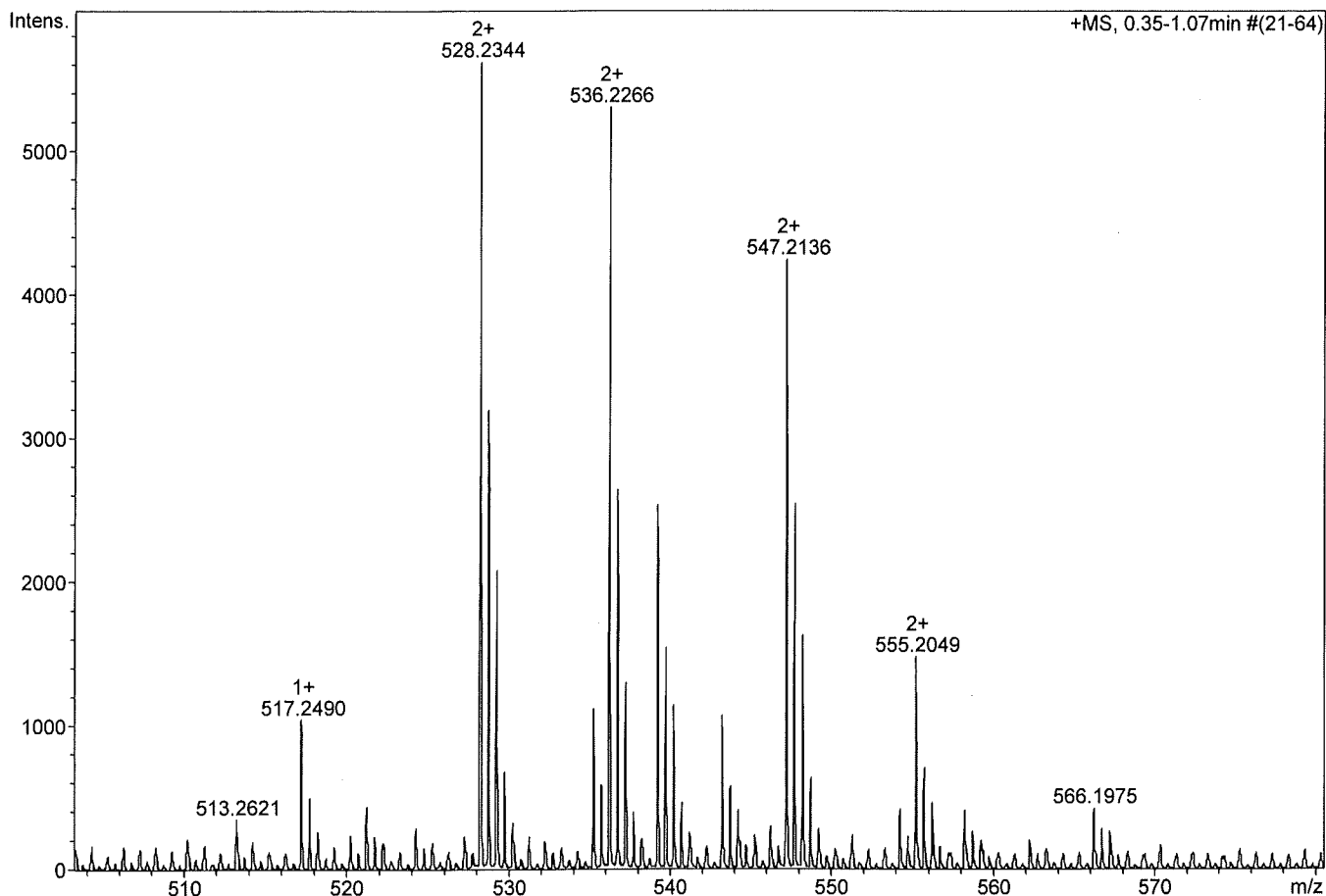
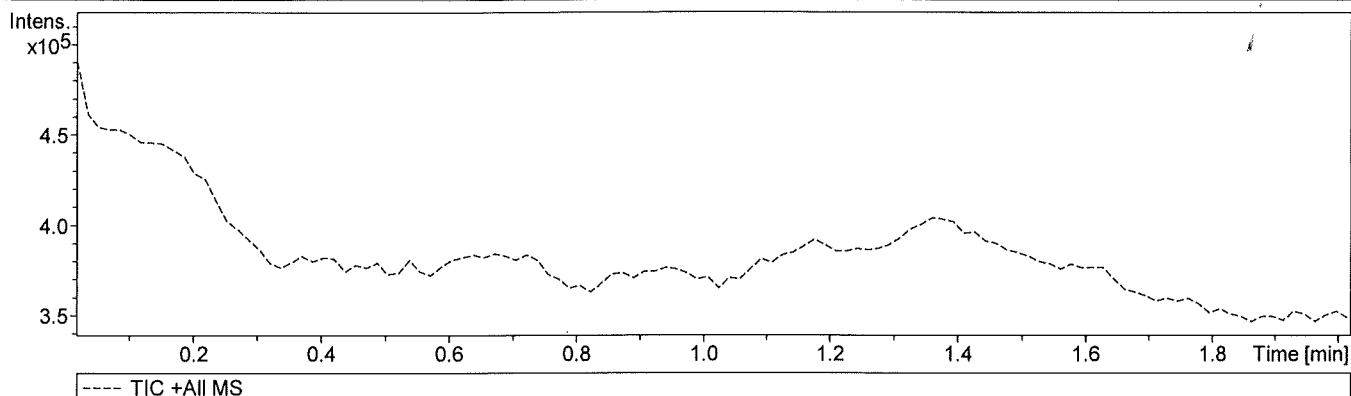
Analysis Name I:\data3\ak klein\Lena\Delftibactin 1033.05gmol-1.d
Method tune_low_pos_changed.m
Sample Name Delftibactin 1033.05gmol-1
Comment

Acquisition Date 9/10/2013 4:59:37 PM

Operator Tof-user
Instrument micrOTOF-Q II 10254

Acquisition Parameter

Source Type	ESI	Ion Polarity	Positive	Set Nebulizer	0.3 Bar
Focus	Not active	Set Capillary	4500 V	Set Dry Heater	180 °C
Scan Begin	50 m/z	Set End Plate Offset	-500 V	Set Dry Gas	4.0 l/min
Scan End	1200 m/z	Set Collision Cell RF	100.0 Vpp	Set Divert Valve	Source



Display Report

Analysis Info

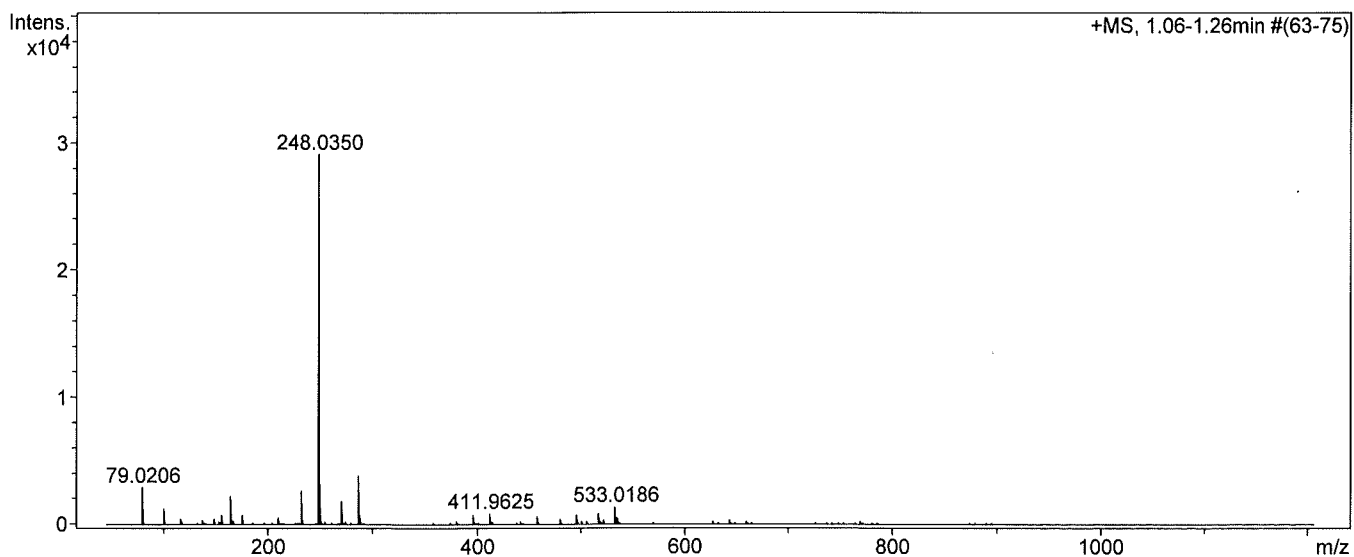
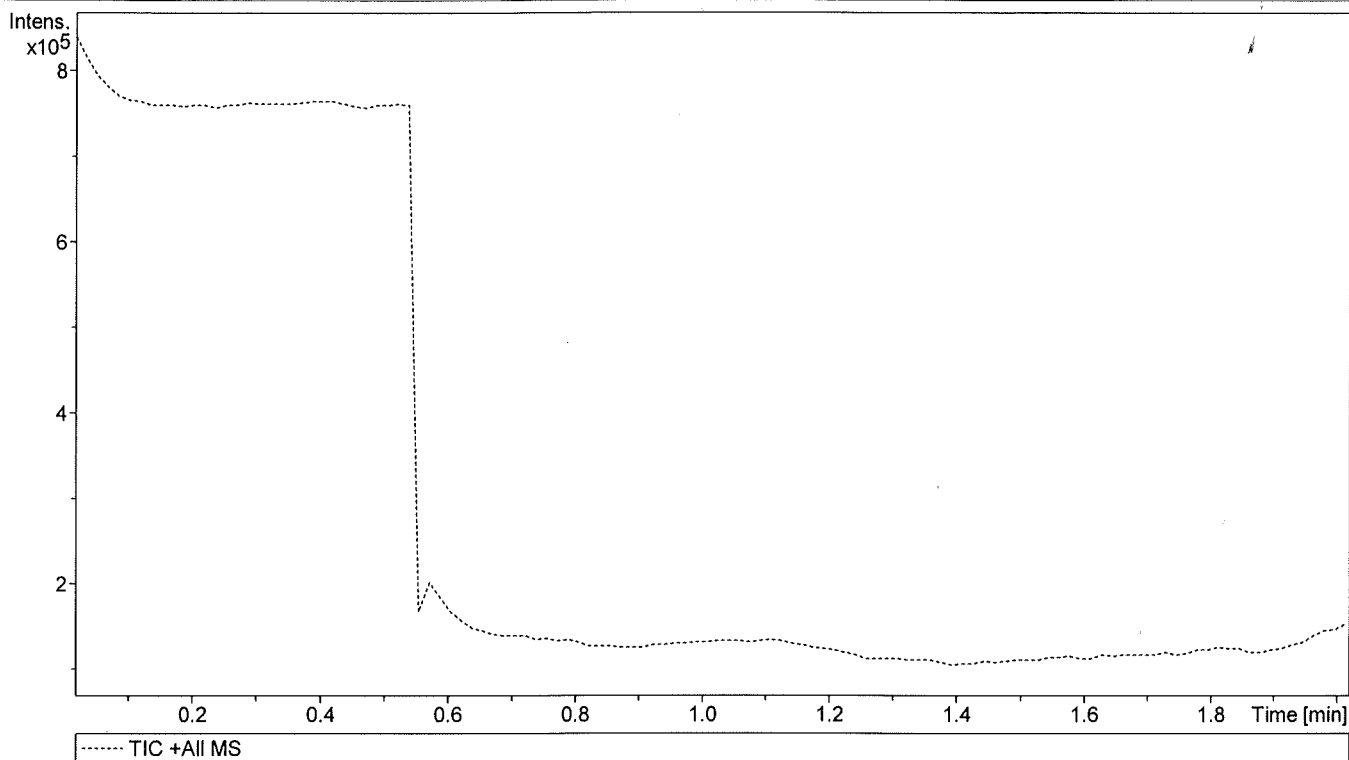
Analysis Name I:\data3\ak klein\Lena\ACM-Medium.d
Method tune_low_pos_changed.m
Sample Name ACM-Medium
Comment

Acquisition Date 9/10/2013 4:37:15 PM

Operator Tof-user
Instrument micrOTOF-Q II 10254

Acquisition Parameter

Source Type	ESI	Ion Polarity	Positive	Set Nebulizer	0.3 Bar
Focus	Not active	Set Capillary	4500 V	Set Dry Heater	180 °C
Scan Begin	50 m/z	Set End Plate Offset	-500 V	Set Dry Gas	4.0 l/min
Scan End	1200 m/z	Set Collision Cell RF	100.0 Vpp	Set Divert Valve	Source



Display Report

Analysis Info

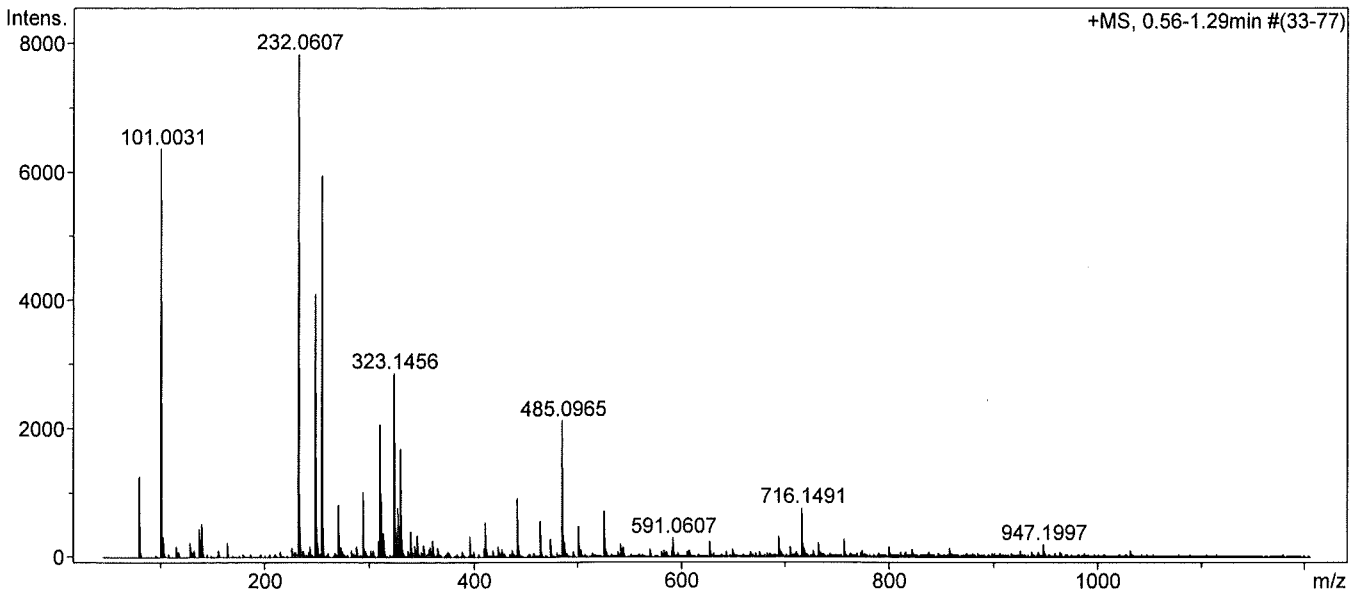
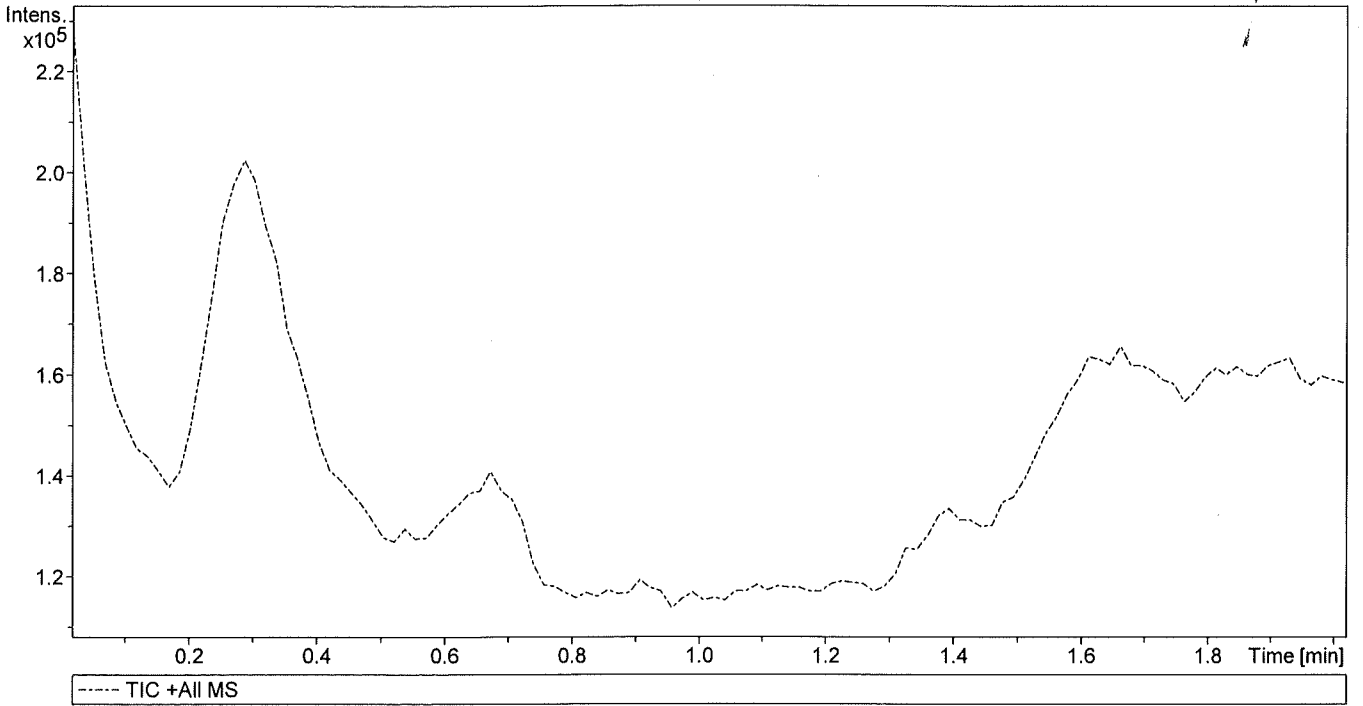
Analysis Name I:\data3\ak klein\Lena\D.Acidovorans Supernatant.d
 Method tune_low_pos_changed.m
 Sample Name D.Acidovorans Supernatant
 Comment

Acquisition Date 9/10/2013 4:42:45 PM

Operator Tof-user
 Instrument micrOTOF-Q II 10254

Acquisition Parameter

Source Type	ESI	Ion Polarity	Positive	Set Nebulizer	0.3 Bar
Focus	Not active	Set Capillary	4500 V	Set Dry Heater	180 °C
Scan Begin	50 m/z	Set End Plate Offset	-500 V	Set Dry Gas	4.0 l/min
Scan End	1200 m/z	Set Collision Cell RF	100.0 Vpp	Set Divert Valve	Source



0-fach 1032.5
1-fach 1033.5
2-fach gelact 517.25
117.25
3-fa 345.17
4 259.13