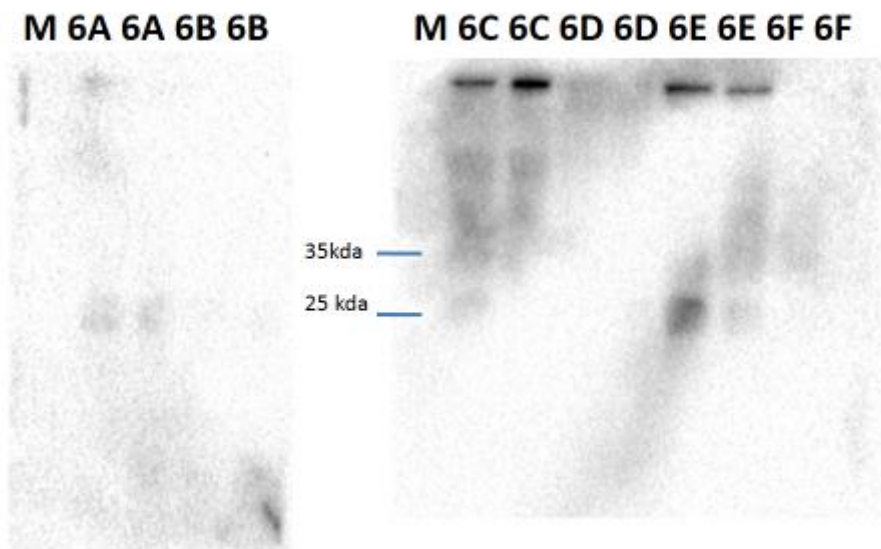


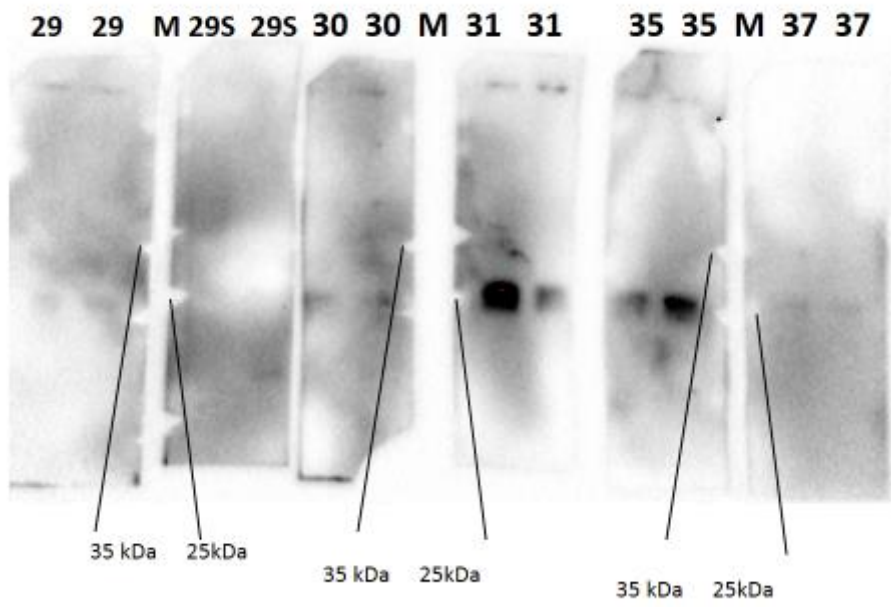
### 01.10.13

- Safa: prepared a liquid culture of BL21 D3  
: pet 22/45 Vector transformation  
:BL21 competent preparation.
- Fatih: isolated and began doing western blotting on Atom x,2x, TNY and LB.  
:Liquid cultures for TAT-Apoptin, TAT-HA-Apoptin, MPG-Apoptin,E4ORF4, TAT-RFP and RFP.
- Abdulkерim and Furkan: Western on OmpA-C215 was accomplished currently immunofluorescence colouring is being done.
- Omer and Taha: currently doing DNA isolation for L26, L37, L33, Hlya-rfP, Hlya-tat-apoptin, TorA-RFP which will be digested, run electrophoresis etc.

### 02.10.13



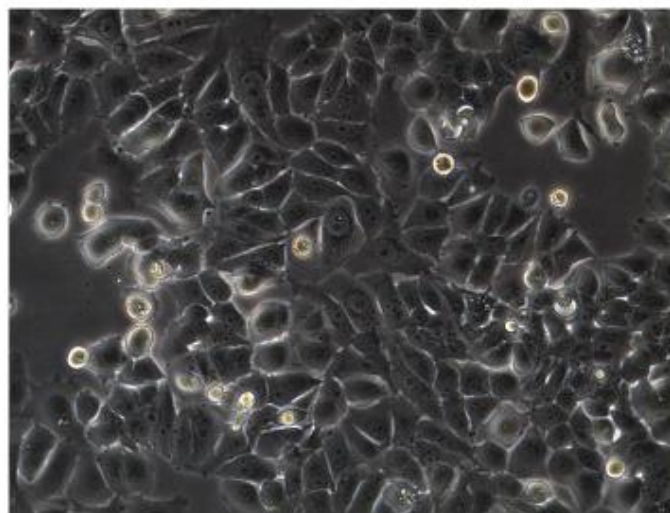
We used western blot experiment in order to observe BBa\_K1202116-BBa\_K1202110 coincubation but this result wasn't so good



We used western blot experiment in order to observe BBa\_K1202105(29) , BBa\_K1202106 (30), BBa\_K1202107(31), BBa\_K1202111(35), BBa\_K1202113(37)

04.10.13

Control 1:



MCF7 Breast cancer cell line  
20x  
Control with DMEM

Figure 1

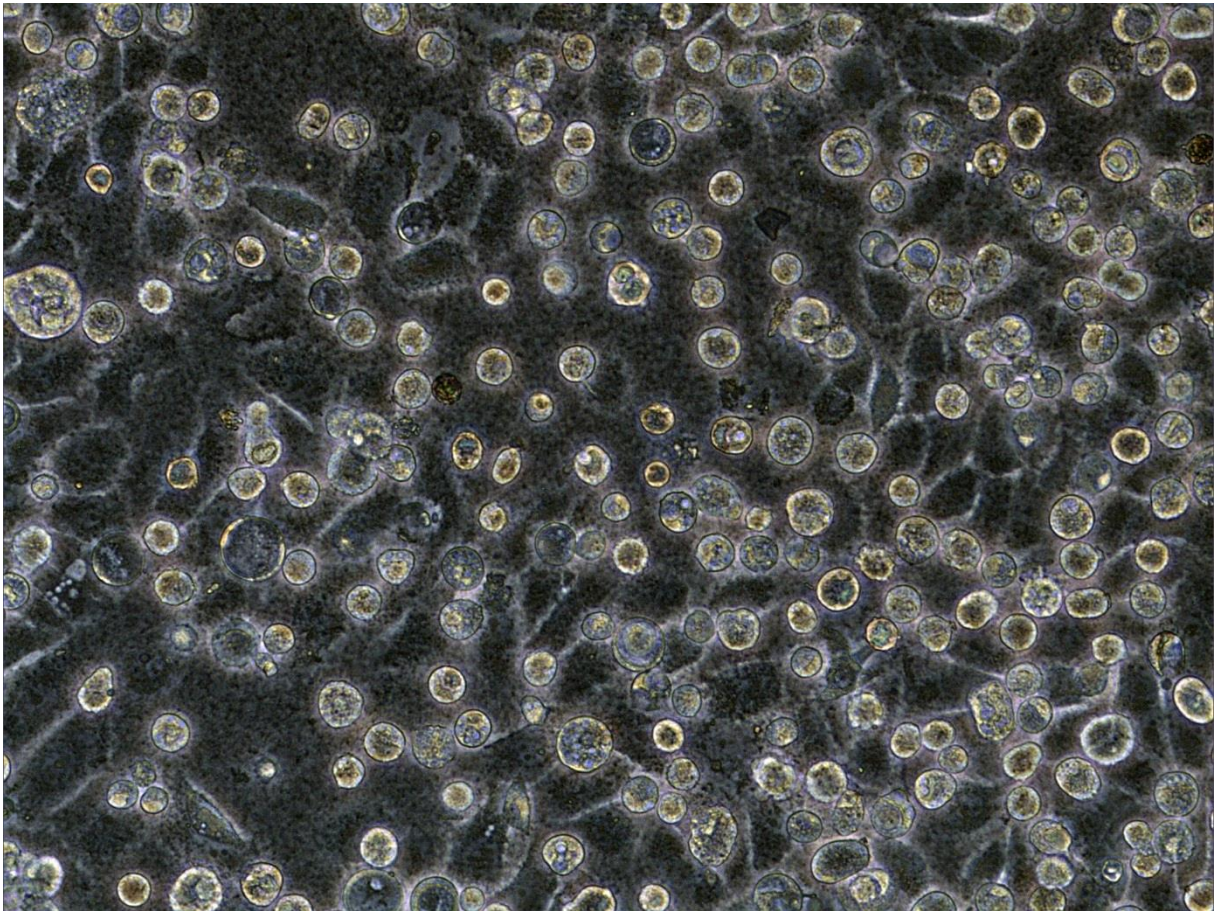


Figure1: MCF7 Breast cancer cell line

20x

Grup1 with %10 e4orf4(BBa\_K1202107)

Figure 2:

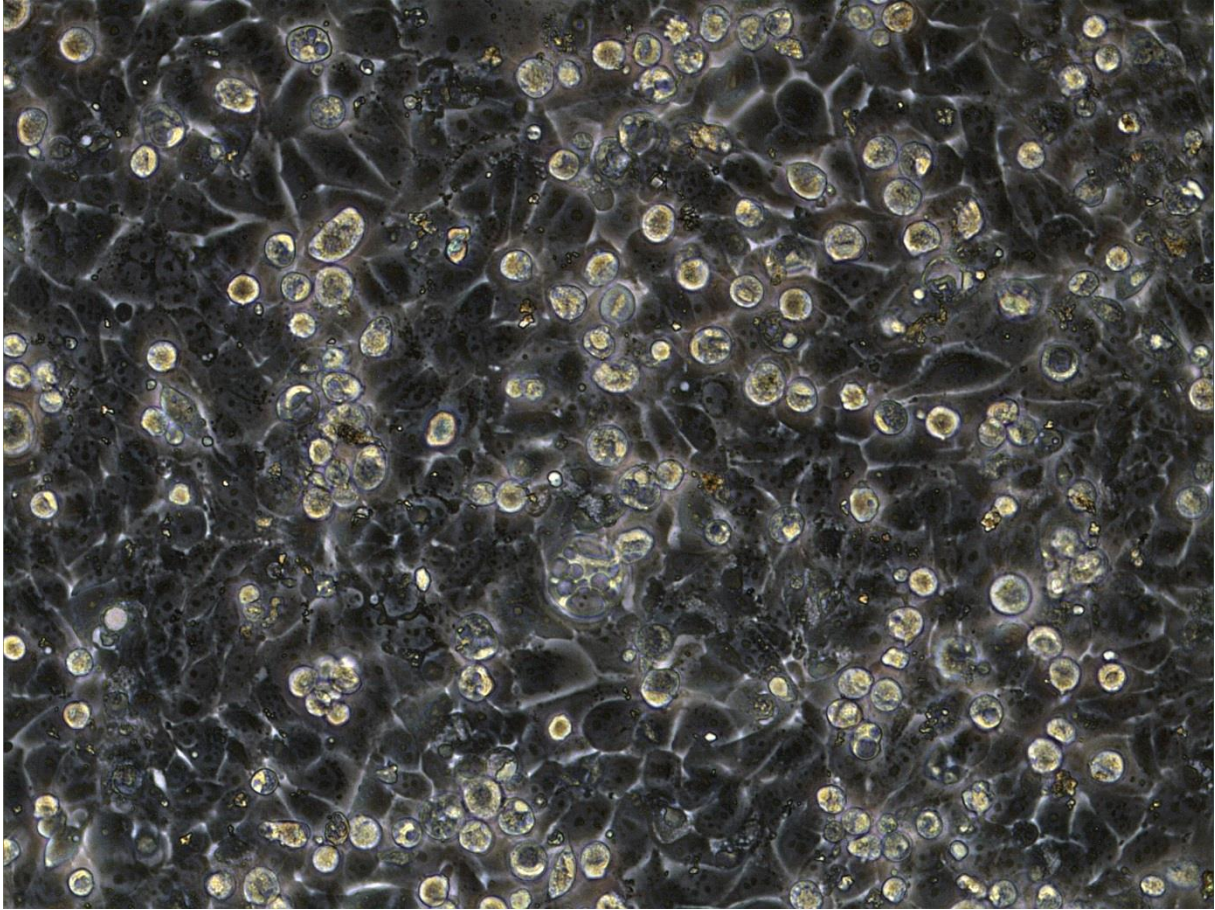


Figure2: : MCF7 Breast cancer cell line

20x

Grup2 with %10 Mpg-apoptin (BBa\_K1202111)

Figure 3:

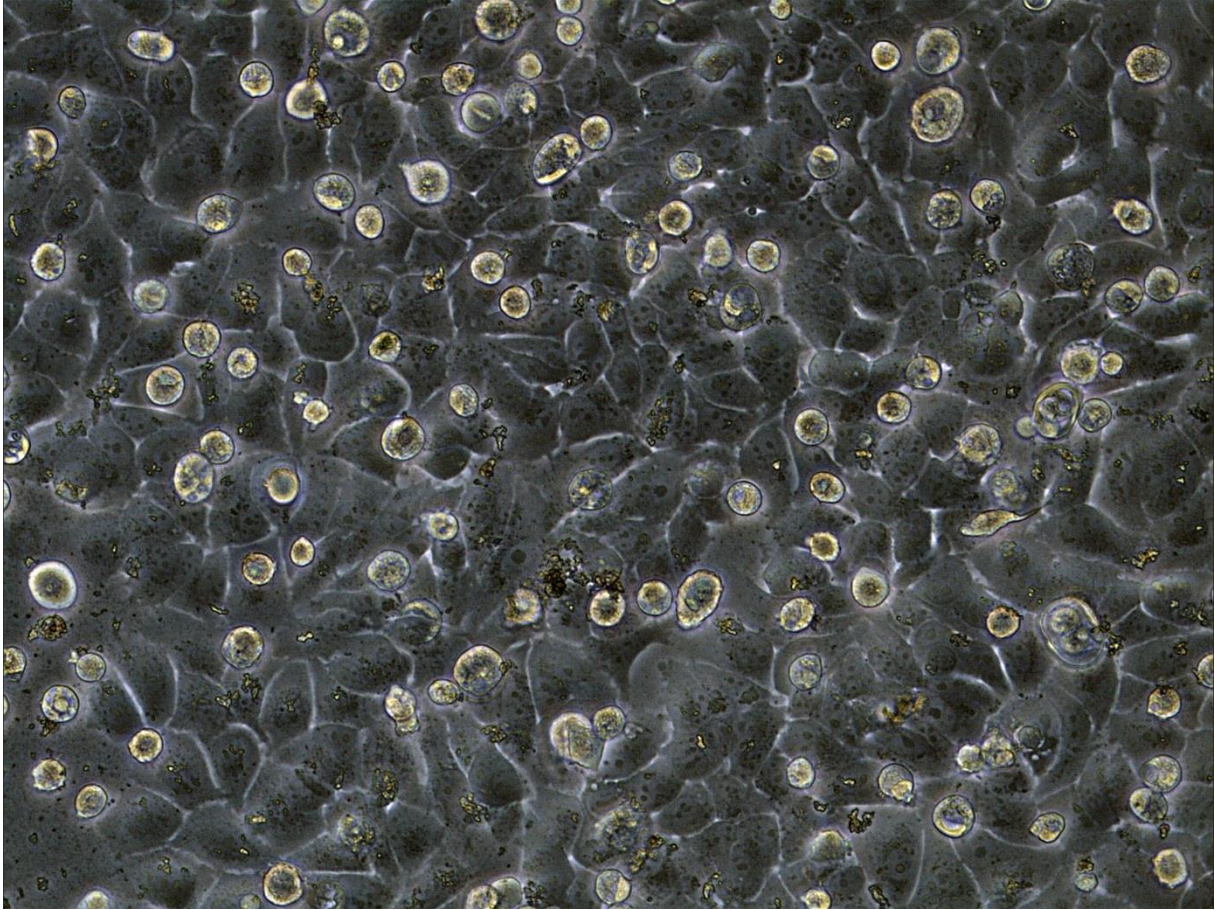
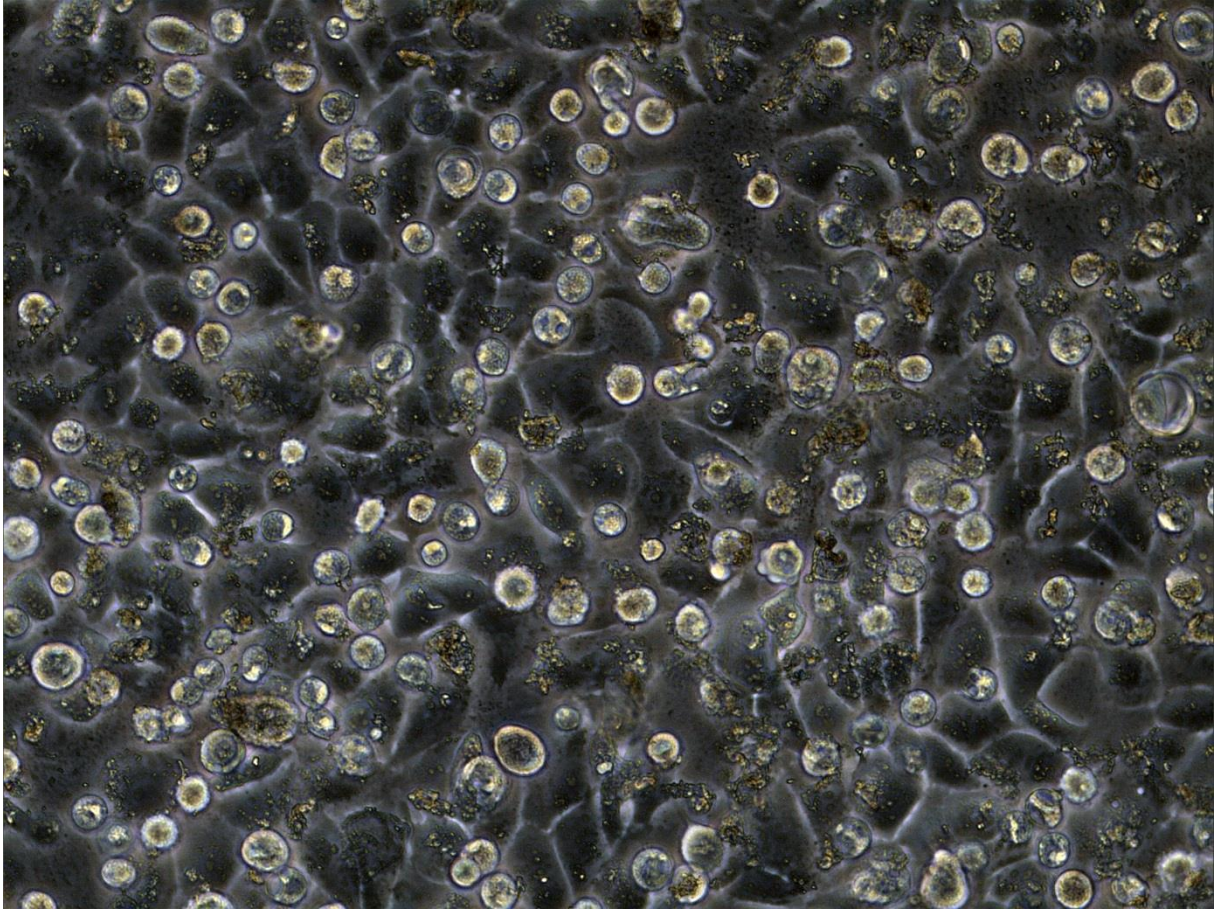


Figure 3: MCF7 Breast cancer cell line

20x

Grup 3 with %10 tat-apoptin(BBa\_K1202105)

Figure 4:

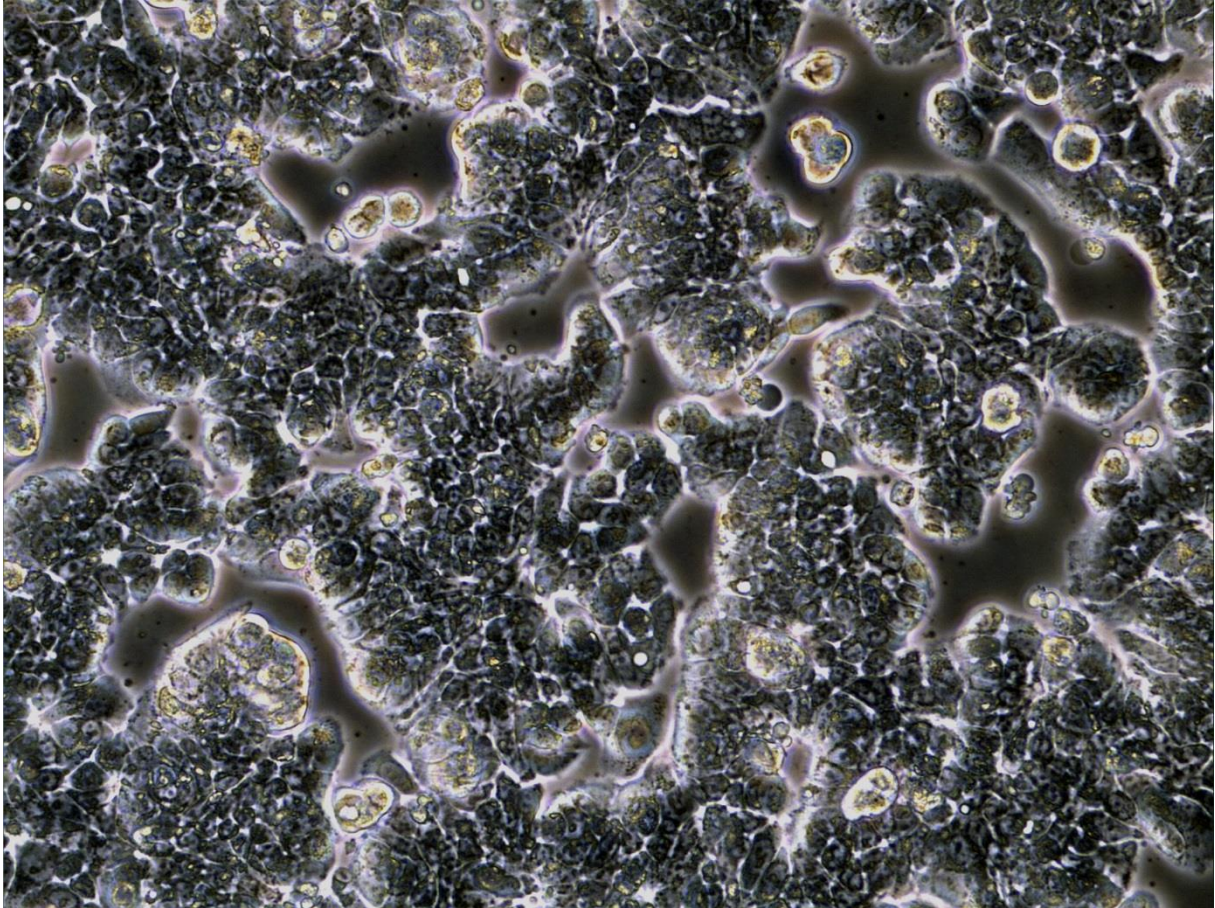


Figüre 4: MCF7 Breast cancer cell line

20x

Grup 4 with %10 tat-ha-apoptin(BBa\_K1202106)

Control 2:



Control 2: HT29 colon cancer cell line

20x

Control 2 with DMEM

Figure 5 :

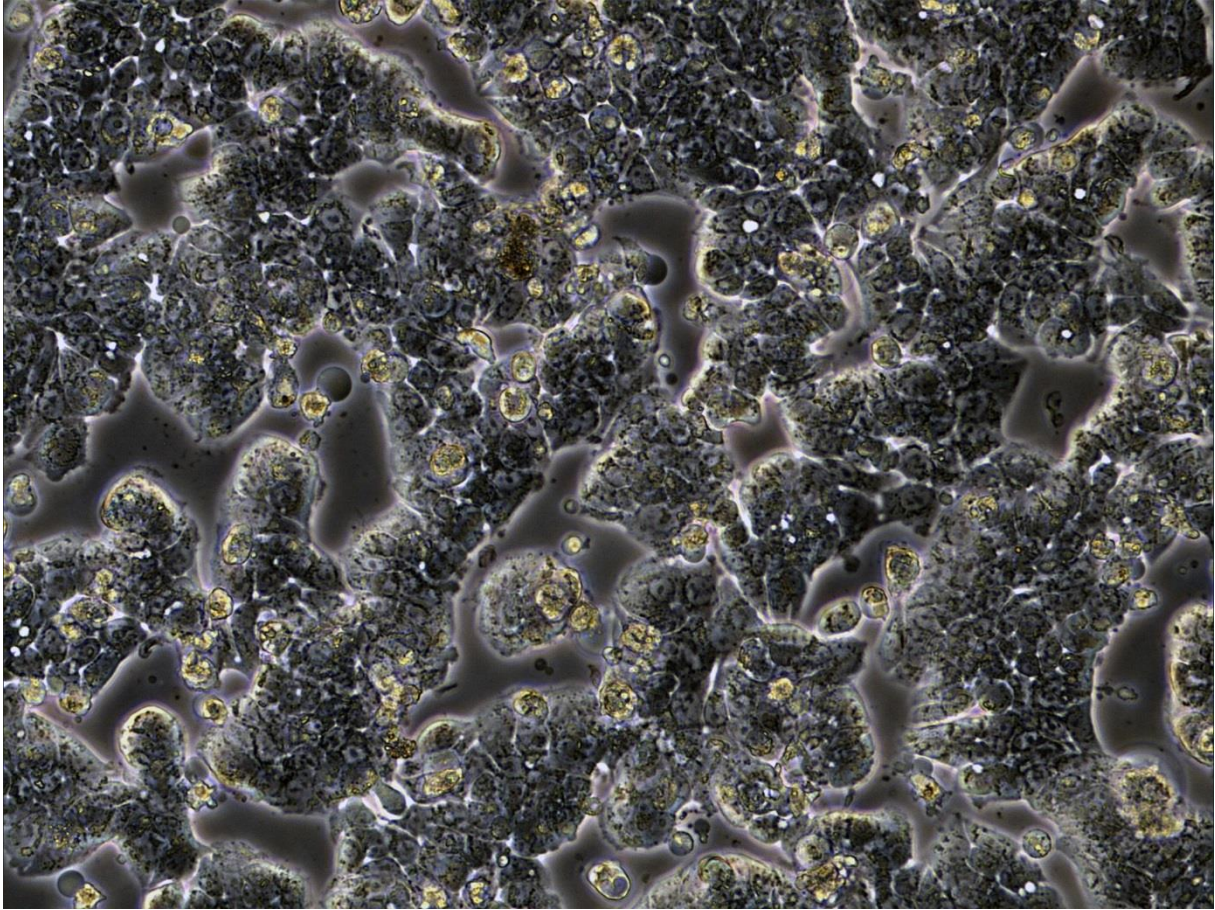


Figure 5: HT29 colon cancer cell line

20x

Grup 1 with %10 tat-apoptin (BBa\_K1202105)

Figure 6:



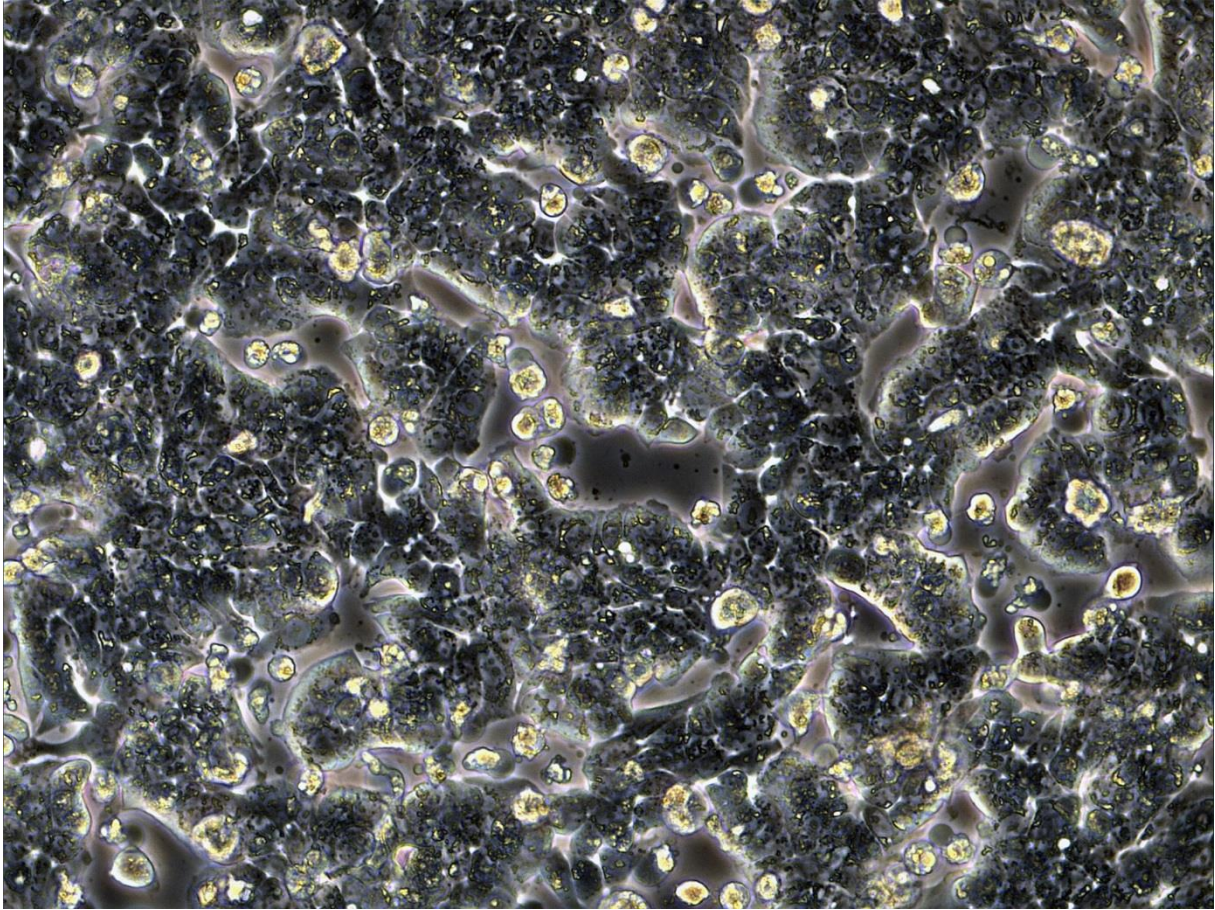


Figure 6: HT29 colon cancer cell line

20x

Grup 2 with %10 e4orf4(BBa\_K1202107)

Figure 7:

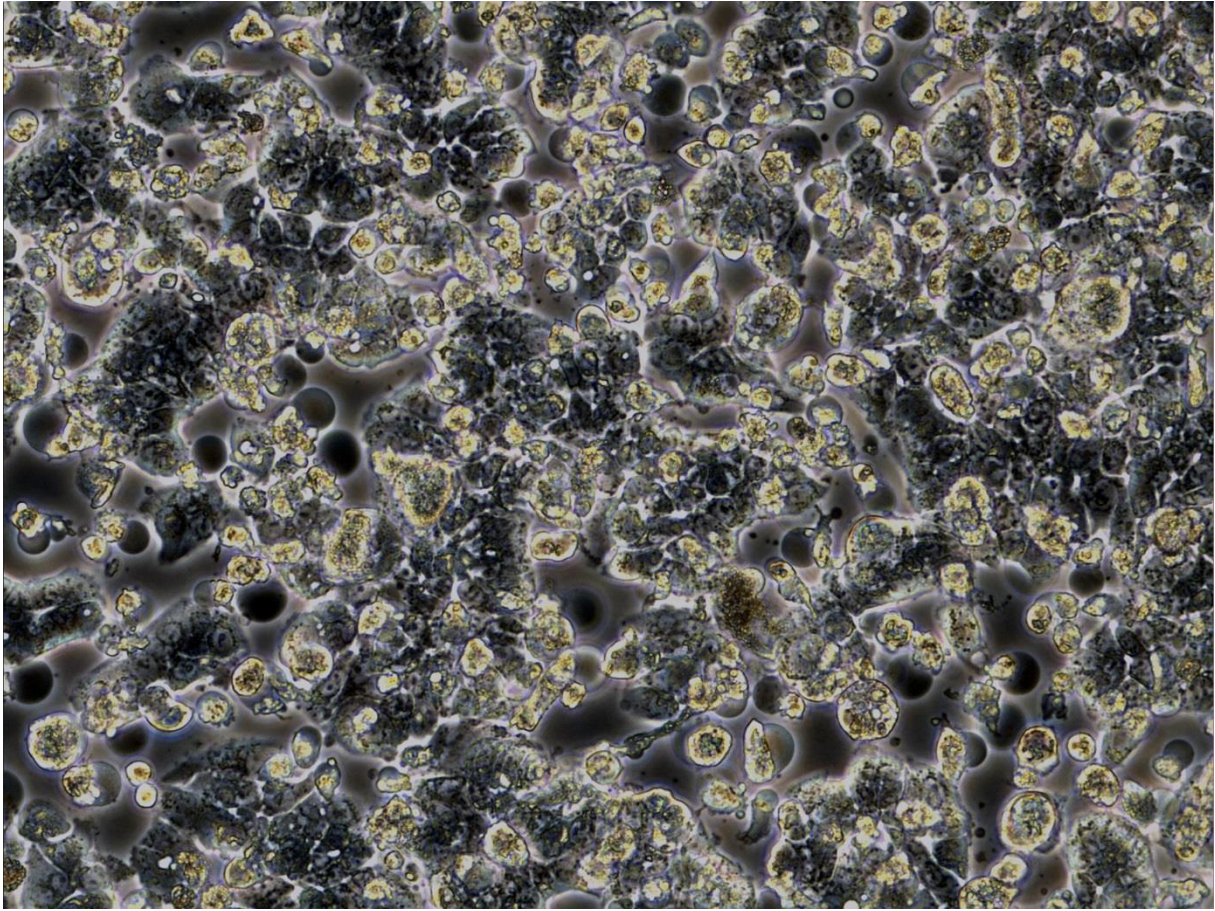


Figure 7: HT29 colon cancer cell line

20x

Grup 2 with %10 MPG-Apoptin(BBa\_K1202111)

Figure 8:

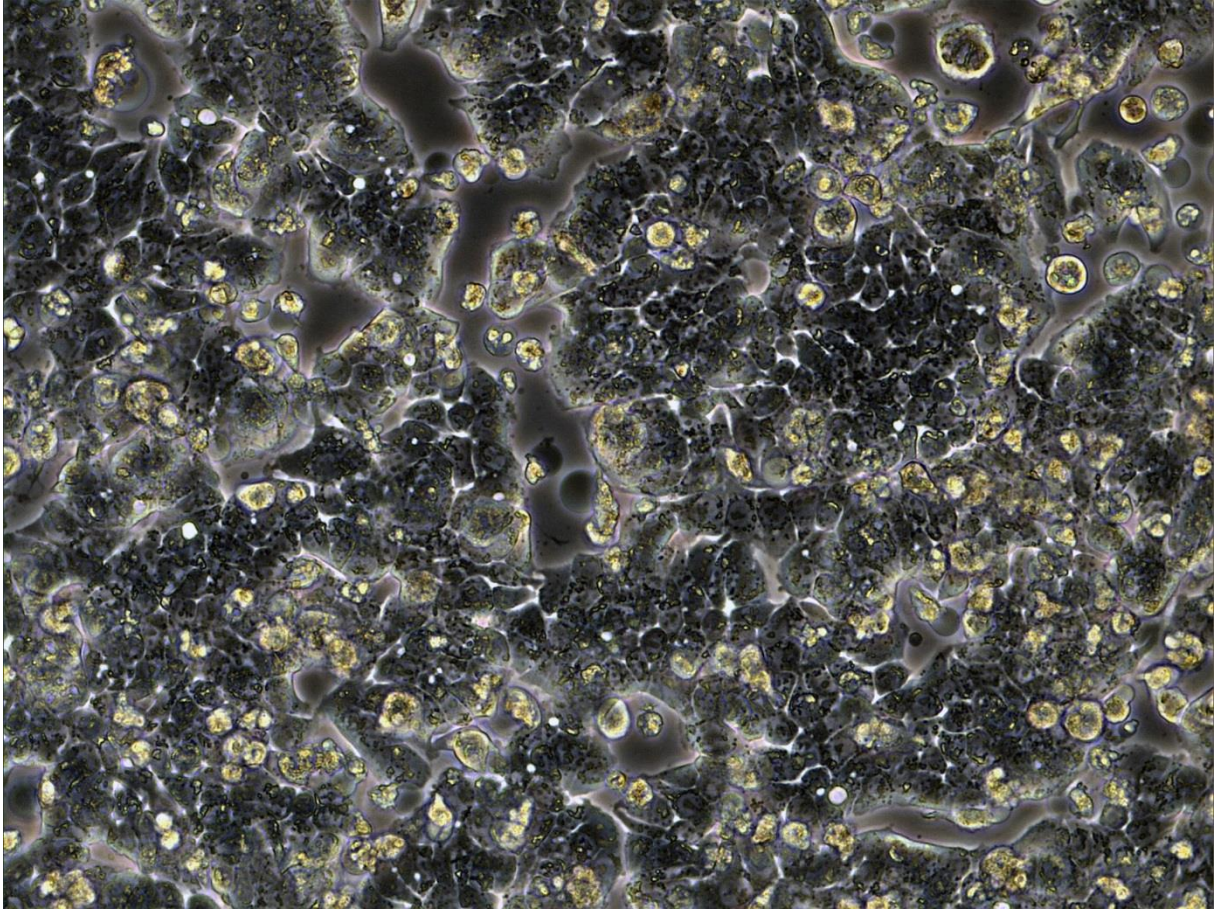


Figure 8: HT29 colon cancer cell line

20x

Grup 2 with %10 tat-ha-Apoptin(BBa\_K1202106)